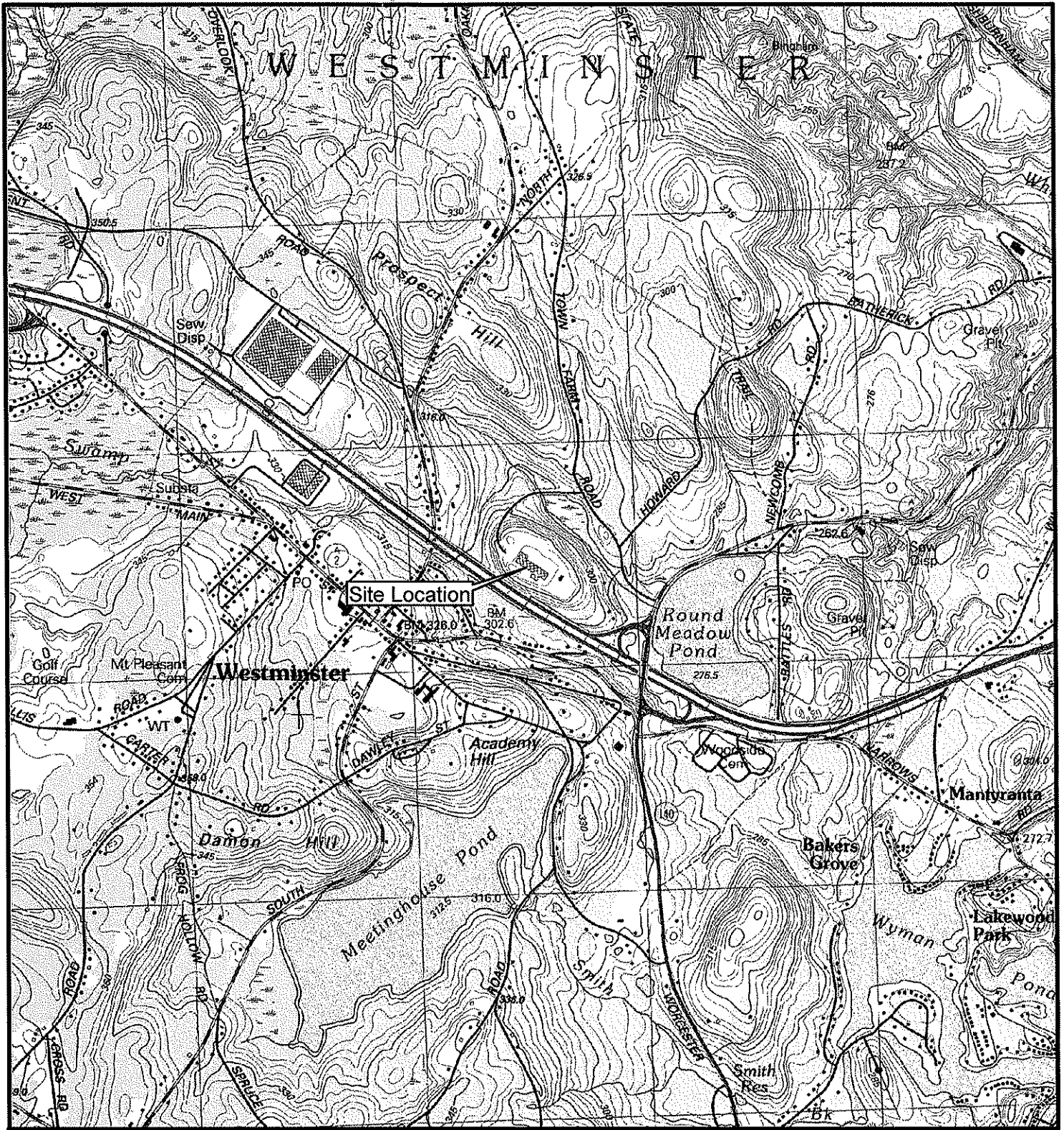
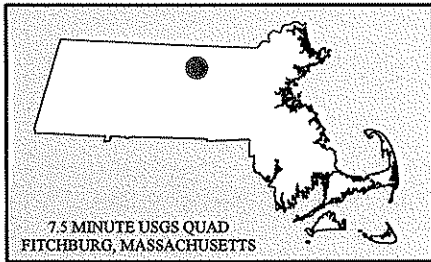


FIGURES



Q:\BLOOMFIELD\05.0889603.00\FIGURES\889603-00_F01_Sitelocus.mxd



SOURCE : SCANNED USGS TOPOGRAPHIC QUADRANGLES
SCANNED BY THE MASSACHUSETTS EXECUTIVE OFFICE OF
ENVIRONMENTAL AFFAIRS, MASSGIS. DISTRIBUTED JUNE, 2001.

Data Supplied by :



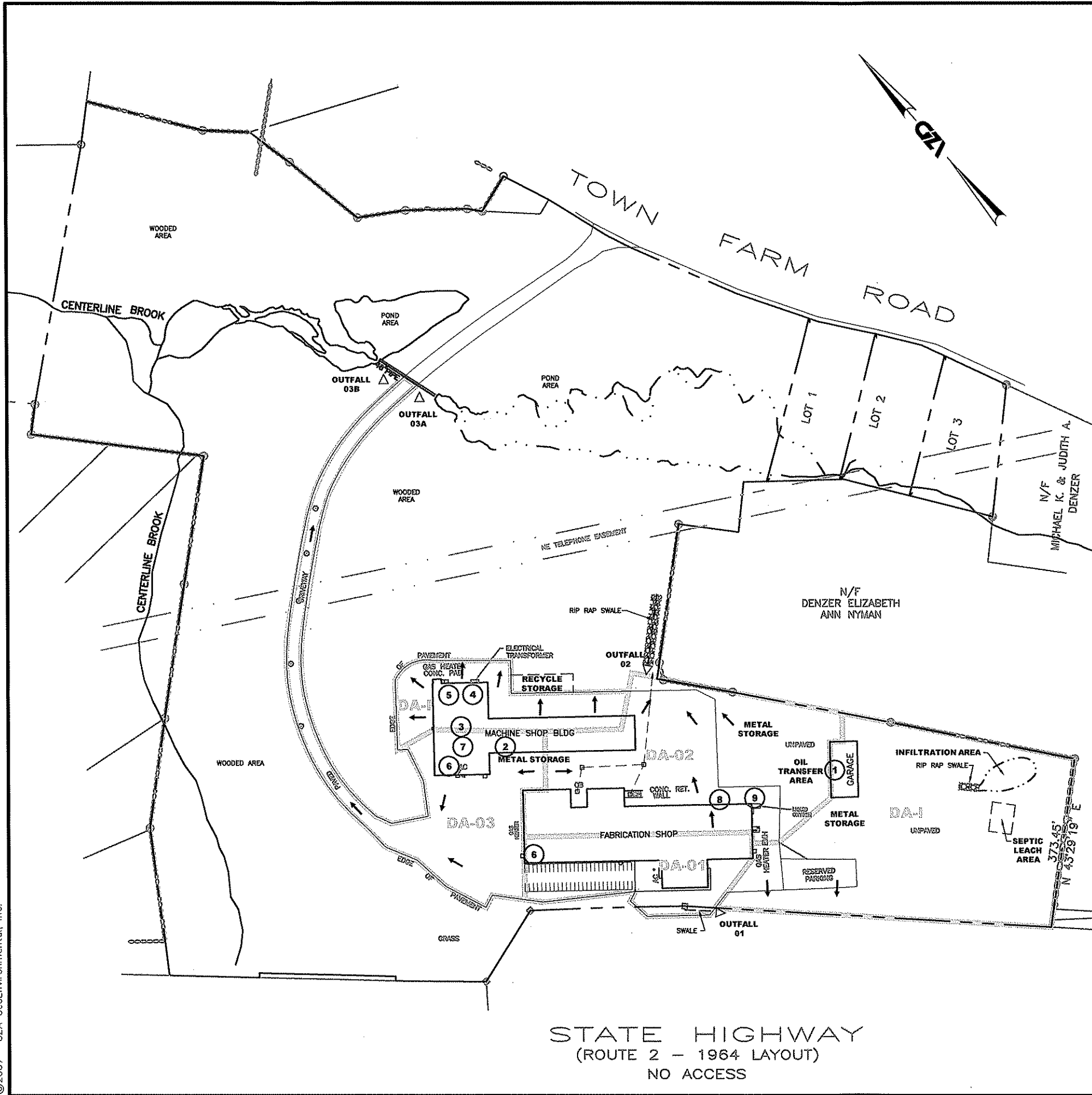
PROJ. MGR.: DIB
DESIGNED BY: CNO
REVIEWED BY: DIB
OPERATOR: EMD
DATE: 03-13-2007

SITE LOCATION MAP

1 BELLA DRIVE
WESTMINSTER, MASSACHUSETTS

JOB NO.
05.0889603.00

FIGURE NO.
1



STATE HIGHWAY
(ROUTE 2 - 1964 LAYOUT)
NO ACCESS

IDENTIFIER	DESCRIPTION	LOCATION	CAPACITY (Gallons)	CONTENTS
1	275 Diesel Tank	AST Inside Garage	275	Diesel
2	Drum Storage Area	Drum (1) Inside Machine Shop	55	Coolant / Oil
3	Drum Storage Area	Drums (4) Inside Machine Shop	220	Various Virgin Oils
4	Coolant / Oil Storage Tank	AST Inside Machine Shop	500	Coolant / Oil
5	Coolant / Oil Tote Storage	Totes (~10) Inside Machine Shop	3,525	Coolant / Oil
6	Drum Storage Area	Drums (8) Inside Fabrication Shop	440	Various
7	Drum Storage Area	Drum (1) Inside Machine Shop	55	Cutting Oil
8	Propane Storage	Cylinders Fab Shop, SE Wall	na	Propane
9	N2 / O2 Tanks	Pressurized Tanks Fab Shop, SE Wall	na	Nitrogen / Oxygen
10	Recyclables Containers	Containers Mach. Shop NE Wall	na	Metals, Wood, and other recyclables
11*	Metal Storage Area	Various*	na	Metals
12*	Wood Storage	Various*	na	Wood
13**	Outdoor Mobile Containers	Various**	Various**	Oil and Grease
14***	Surface Sediment	Various***	na	Sediment

Notes to Table:
 * - Metal / Wood storage occur along several portions of the facility; denoted on Plan.
 ** - Outdoor Mobile Containers are not depicted on site plan; these containers include mobile site equipment and personnel vehicles.
 *** - Areas of potential surface sediment are depicted as earthen areas on site plan.
 1 - Indoor containers are transferred among the facility buildings as needed.
 2 - Indoor locations are approximate, based upon scale.

- LEGEND:**
- UTILITY POLE
 - STONE BOUND
 - DRILL HOLE SET
 - IRON PIN (IPIN)
 - IRON PIPE (IP)
 - STONE WALL
 - CATCH BASIN
 - EASEMENT LINE
 - BIT. CONC. ROAD
 - DRAINAGE FLOW
 - DRAINAGE AREA BOUNDARY
 - OUTFALL
 - RIP-RAP

NOTES:

1. BASE MAP DEVELOPED FROM PLAN PROVIDED BY BRADFORD ENGINEERING CO. ENTITLED "PLAN OF LAND IN WESTMINSTER, MA., 48 TOWN FARM ROAD", DATED 10/17/05, SCALE: 1"=60', SHEET 1 OF 1.

SCALE IN FEET

PROJ MGR: DIB
 DESIGNED BY: CNO
 REVIEWED BY: DIB

OPERATOR: MJS/EMD
 DATE : 03-13-2007

RANOR, INC.
 WESTMINSTER, MASSACHUSETTS

SITE PLAN

PROJECT NO.

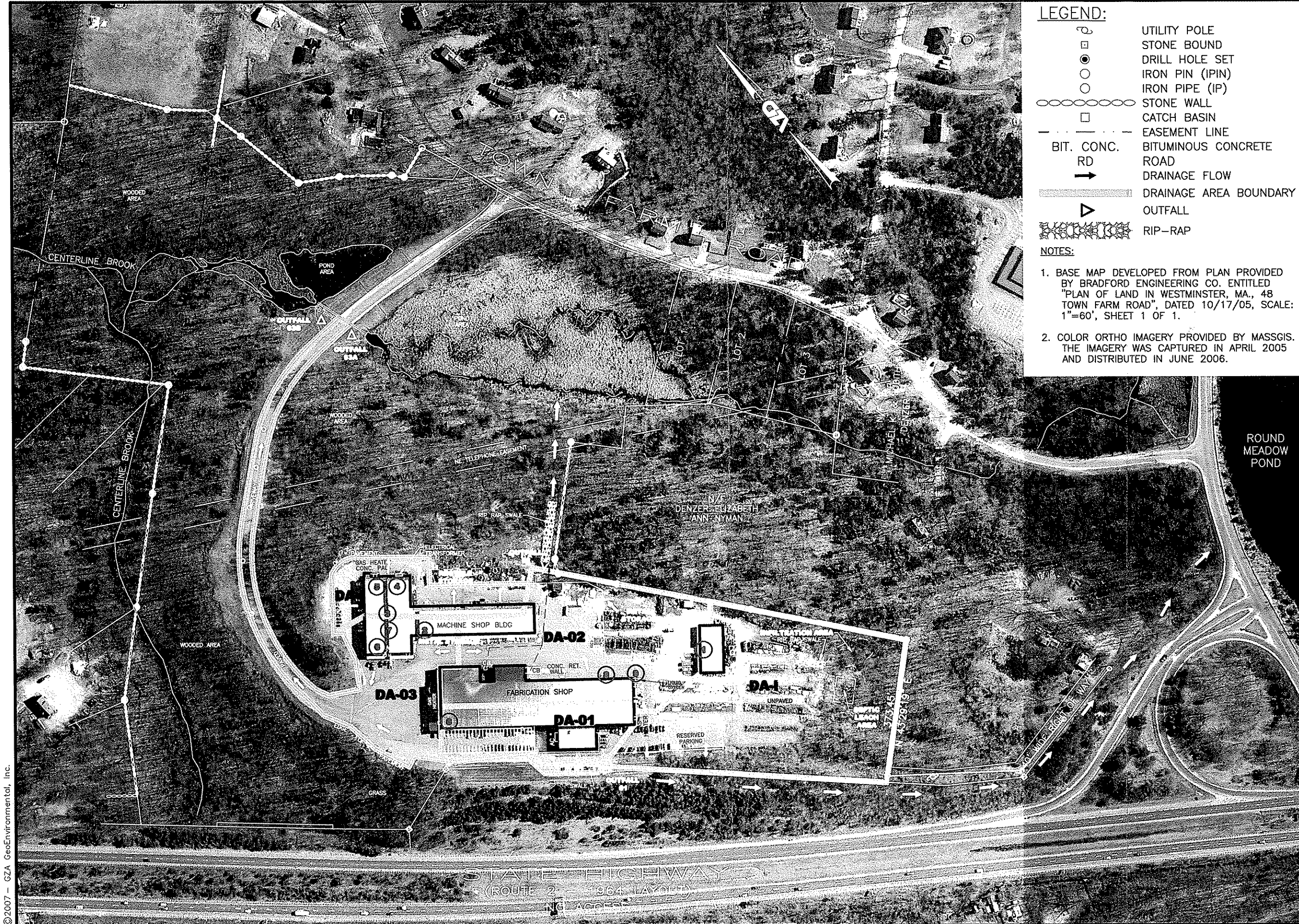
05.0889603.00

FIGURE NO.

2

GZA GeoEnvironmental, Inc.

120 MOUNTAIN AVENUE
BLOOMFIELD, CT 06002
Ph.: (860) 243-9055
Fax: (860) 286-8900



LEGEND:

- UTILITY POLE
- STONE BOUND
- DRILL HOLE SET
- IRON PIN (IPIN)
- IRON PIPE (IP)
- STONE WALL
- CATCH BASIN
- - - - - EASEMENT LINE
- BIT. CONC. BITUMINOUS CONCRETE
- RD ROAD
- DRAINAGE FLOW
- ▬ DRAINAGE AREA BOUNDARY
- ▽ OUTFALL
- ▨ RIP-RAP

NOTES:

1. BASE MAP DEVELOPED FROM PLAN PROVIDED BY BRADFORD ENGINEERING CO. ENTITLED "PLAN OF LAND IN WESTMINSTER, MA., 48 TOWN FARM ROAD", DATED 10/17/05, SCALE: 1"=60', SHEET 1 OF 1.
2. COLOR ORTHO IMAGERY PROVIDED BY MASSGIS. THE IMAGERY WAS CAPTURED IN APRIL 2005 AND DISTRIBUTED IN JUNE 2006.

SCALE IN FEET
0 120' 240' 480'

PROJ MGR: DIB OPERATOR: MAJ/EMD
DESIGNED BY: CNO DATE : 03-13-2007
REVIEWED BY: DIB

GZA GeoEnvironmental, Inc.
120 MOUNTAIN AVENUE
BLOOMFIELD, CT 06002
Ph: (860) 243-9055
Fax: (860) 286-8900

RANOR, INC.
WESTMINSTER, MASSACHUSETTS

SITE PLAN WITH COLOR ORTHOPHOTO

PROJECT NO.
05.0889603.00

FIGURE NO.
3